

ALEXANDRIAN HUNTERDON

TOWNSHIP

VAN CLEEF ENGINEERING ASSOCIATES
157 ROUTE 31, LEBANON, NEW JERSEY
REVISED: 6/11/89, 12/15/90, 1/19/91, 2/15/96

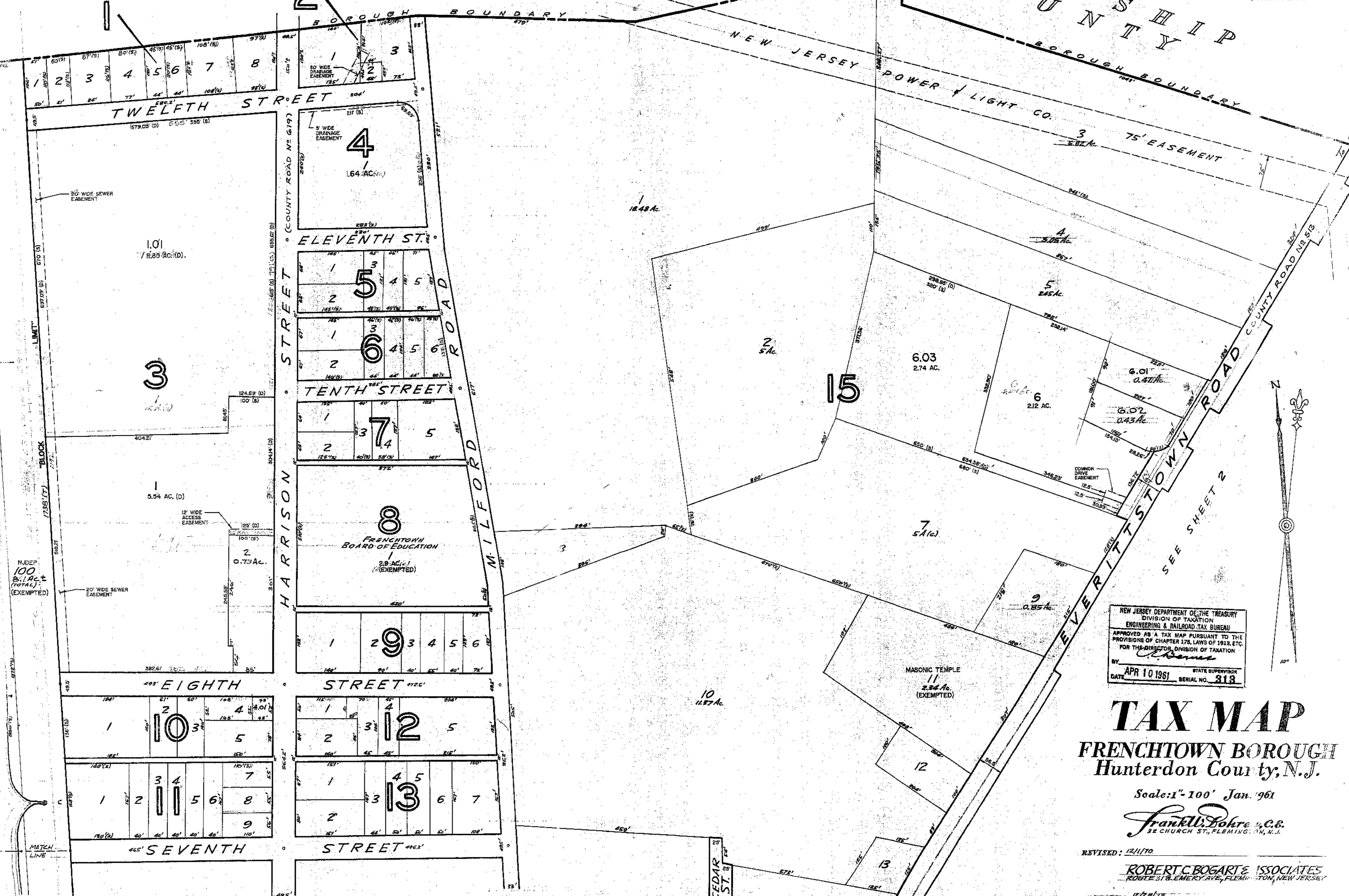
JAN. 1999 ERROL MELNICK, P.L.S. N.J. LIC. No. 34013
FEB. 2000 ERROL MELNICK, P.L.S. N.J. LIC. No. 34013
DEC. 2001 CARL M. HERRMAN, P.L.S. N.J. LIC. No. 42271
JAN. 2003 CARL M. HERRMAN, P.L.S. N.J. LIC. No. 42271
DEC. 2003 CARL M. HERRMAN, P.L.S. N.J. LIC. No. 42271

Delaware River

4

NJDEP 102
2.1 AC.±
(EXEMPTED)

NJDEP 103
2.1 AC.±
(EXEMPTED)



NEW JERSEY DEPARTMENT OF THE TREASURY
DIVISION OF TAXATION
ENGINEERING & RAILROAD TAX BUREAU
APPROVED AS A TAX MAP PURSUANT TO THE
PROVISIONS OF CHAPTER 176, LAWS OF 1913, ETC.
FOR THE DIRECTOR, DIVISION OF TAXATION
BY: *[Signature]*
DATE: APR 10 1961 STATE SUPERVISOR
SERIAL NO. 313

TAX MAP

FRENCHTOWN BOROUGH Hunterdon County, N.J.

Scale: 1" = 100' Jan. '961

Frank W. Dohre & Co.
32 CHURCH ST., FLEMINGTON, N.J.

REVISED: 12/1/70
ROBERT C. BOGART & ASSOCIATES
ROUTE 318, EMERY AVE., FLEMINGTON, NEW JERSEY

REVISED: 10/28/75
SEE KEY MAP FOR LATEST REVISION DATE

SEE SHEET 3

SEE SHEET 2