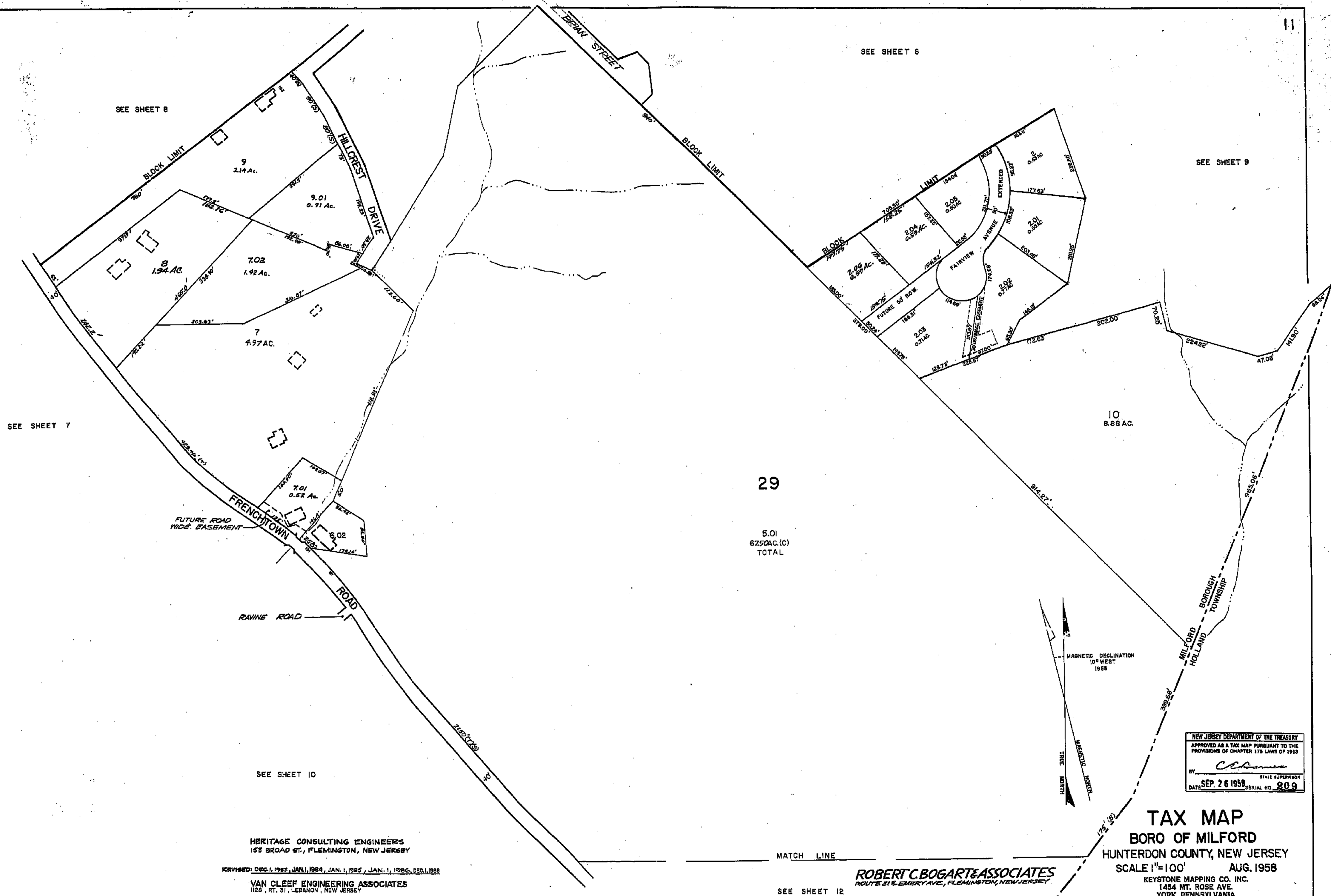


SEE SHEET 8

SEE SHEET 8

SEE SHEET 9



SEE SHEET 7

29

5.01
67.50 AC. (C)
TOTAL

SEE SHEET 10

HERITAGE CONSULTING ENGINEERS
153 BROAD ST., FLEMINGTON, NEW JERSEY

REVISED: DEC. 1, 1982, JAN. 1, 1984, JAN. 1, 1985, JAN. 1, 1986, DEC. 1, 1988

VAN CLEEF ENGINEERING ASSOCIATES
1128 RT. 31, LEBANON, NEW JERSEY

REVISED: JAN. 20, 1982

MATCH LINE

SEE SHEET 12

ROBERT C. BOGART & ASSOCIATES
ROUTE 31 & EMERY AVE., FLEMINGTON, NEW JERSEY

REVISED: 12 JULY, 1975, AUG. 1, 1974, MAY, 1976, NOV. 1, 1975
AUG. 1, 1976, NOV. 1, 1978, JAN. 1, 1980, 12/5/1990

NEW JERSEY DEPARTMENT OF THE TREASURY
APPROVED AS A TAX MAP PURSUANT TO THE
PROVISIONS OF CHAPTER 175 LAWS OF 1913

BY: *C. Chalmers* STATE SUPERVISOR
DATE: SEP. 26 1958 SERIAL NO. 209

TAX MAP
BORO OF MILFORD
HUNTERDON COUNTY, NEW JERSEY
SCALE 1"=100' AUG. 1958

KEYSTONE MAPPING CO. INC.
1454 MT. ROSE AVE.
YORK, PENNSYLVANIA

REVISED NOV. 1, 1968

REVISED TO DEC. 12, 1963, REVISED TO JULY 1, 1973