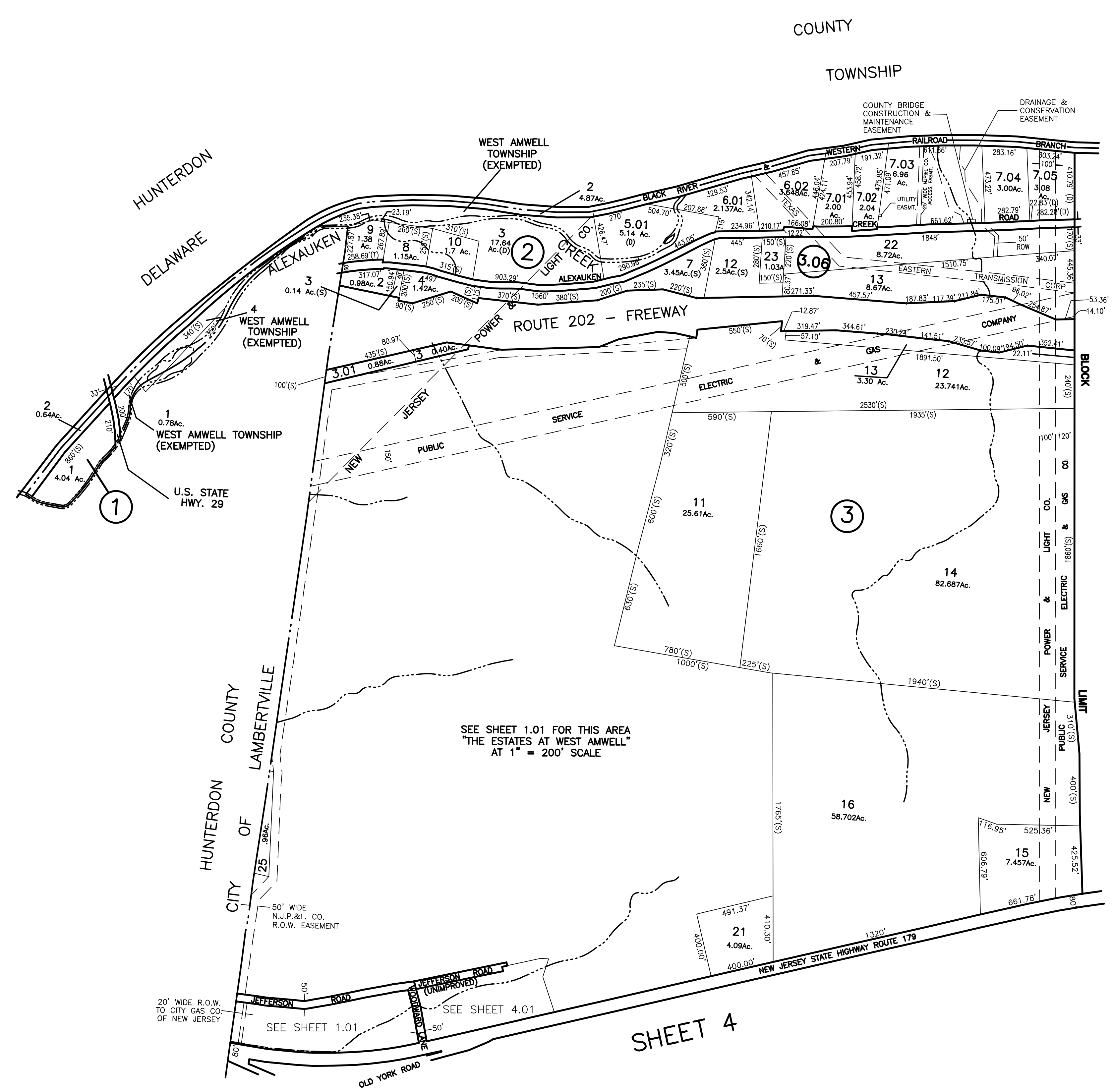
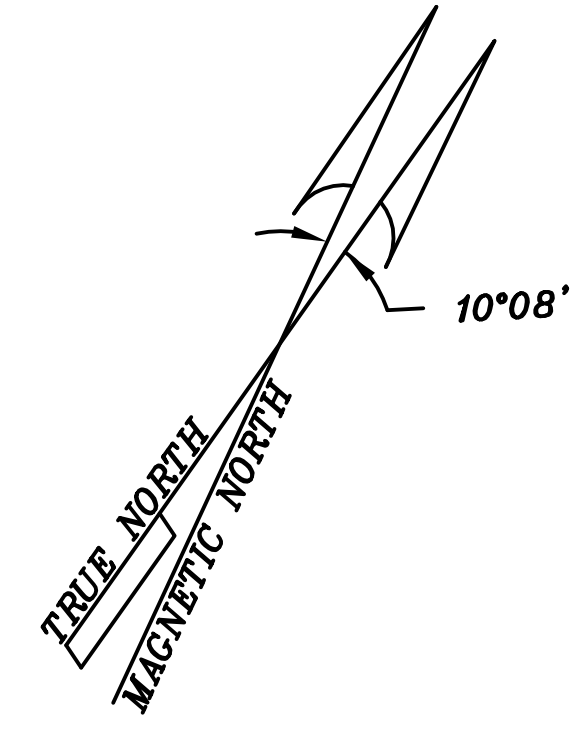


REVISIONS		
DATE	L.S. NAME	LIC. NO.



SHEET 2



ROBERT C. BOGART & ASSOCIATES
 ROUTE 31 & EMORY AVE. FLEMINGTON, NEW JERSEY
 REVISED: NOV 1, 1972, MARCH 21, 1974, OCT 1, 1974, MAY 1, 1975
 ROB NOV 1, 1975, NOV 1, 1976, NOV 1, 1977
 NOV 1, 1978, JAN 1, 1980, JAN 1, 1981

HERITAGE CONSULTING ENGINEERS
 153 BROAD STREET, FLEMINGTON, NEW JERSEY
 REVISED: MAY 1, 1982, DEC 1, 1982, APRIL 1 1983, DEC 1, 1983
 FEB 14, 1984, JAN 1, 1985, JAN 1, 1986

VAN CLEEF ENGINEERING ASSOCIATES
 157 ROUTE 31, LEBANON, NEW JERSEY
 REVISED: FEB 2, 1988, JAN 11, 1989, JAN 10, 1990
 DEC. 1, 1990, JAN 2, 1992, JAN. 4, 1993, JAN. 4, 1996

FEB. 1998 ERROL MELNICK, P.L.S. N.J. #34013
 OCT. 1998 ERROL MELNICK, P.L.S. N.J. #34013
 JAN. 2001 CARL M. HERRMAN, P.L.S. N.J. #42271
 DEC., 2003 CARL M. HERRMAN, P.L.S. N.J. #42271

MAP REVISED TO JULY 28, 1964 by FRANK W. BOHREN, C.E.
 REVISED TO AUG. 17, 1965 by FRANK W. BOHREN, C.E.
 REVISED TO AUG. 22, 1966 by FRANK W. BOHREN, C.E.
 REVISED TO JUNE 27, 1967 by FRANK W. BOHREN, C.E.
 REVISED TO SEPT. 5, 1968 by FRANK W. BOHREN, C.E.
 REVISED TO APRIL 1, 1970 by FRANK W. BOHREN, C.E.
 REVISED TO JAN. 1, 1971 by FRANK W. BOHREN, C.E.

SHEET 4.01

SHEET 4

NEW JERSEY DEPARTMENT OF THE TREASURY
 DIVISION OF TAXATION
 PROPERTY ADMINISTRATION
 APPROVED AS A TAX MAP PURSUANT TO THE AUTHORITY OF
 N.J.A.C. 17:27-12 & 14-01
 FOR THE DIVISION OF TAXATION
 James J. Coll, Chief, Local Assessment Compliance
 Santo C. DiDonato, Supervising Field Representative
 DATE: DEC. 29 2003 SERIAL NO. 825

NEW JERSEY DEPARTMENT OF THE TREASURY
 DIVISION OF TAXATION
 APPROVED AS A TAX MAP PURSUANT TO THE
 PROVISIONS OF CHAPTER 175 LAWS OF 1913
 BY C.E. BARMAN, STATE SUPERVISOR
 DATE: DEC 21 1959 SERIAL NO. 260

"TO SHOW CONDITIONS AS OF NOV., 2007"
WEST AMWELL TOWNSHIP TAX MAP
 HUNTERDON COUNTY NEW JERSEY
 SCALE: 1" = 400' OCTOBER 1959
 AERO SERVICE CORPORATION
 210 E. COURTLAND STREET PHILADELPHIA, PA