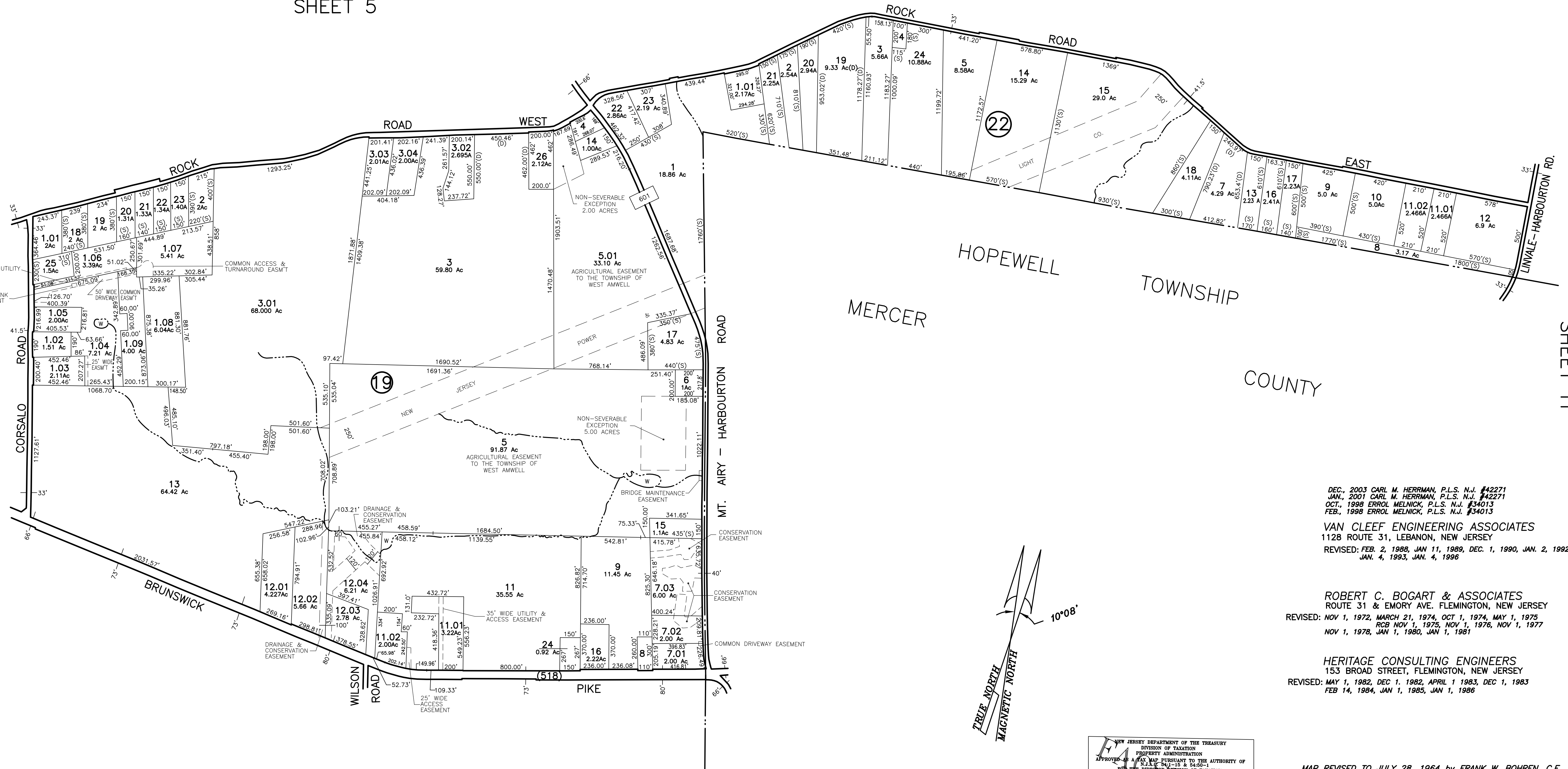


REVISIONS		
DATE	L.S. NAME	LIC. NO.
NOV. 2007	JAMES D. McEWEN	#31659



DEC., 2003 CARL M. HERRMAN, P.L.S. N.J. #42271
 JAN., 2001 CARL M. HERRMAN, P.L.S. N.J. #42271
 OCT., 1998 ERROL MELNICK, P.L.S. N.J. #34013
 FEB., 1998 ERROL MELNICK, P.L.S. N.J. #34013
VAN CLEEF ENGINEERING ASSOCIATES
 1128 ROUTE 31, LEBANON, NEW JERSEY
 REVISED: FEB. 2, 1988, JAN 11, 1989, DEC. 1, 1990, JAN. 2, 1992
 JAN. 4, 1993, JAN. 4, 1996

ROBERT C. BOGART & ASSOCIATES
 ROUTE 31 & EMORY AVE. FLEMINGTON, NEW JERSEY
 REVISED: NOV 1, 1972, MARCH 21, 1974, OCT 1, 1974, MAY 1, 1975
 RCB NOV 1, 1975, NOV 1, 1976, NOV 1, 1977
 NOV 1, 1978, JAN 1, 1980, JAN 1, 1981

HERITAGE CONSULTING ENGINEERS
 153 BROAD STREET, FLEMINGTON, NEW JERSEY
 REVISED: MAY 1, 1982, DEC 1, 1982, APRIL 1 1983, DEC 1, 1983
 FEB 14, 1984, JAN 1, 1985, JAN 1, 1986

NEW JERSEY DEPARTMENT OF THE TREASURY
 DIVISION OF TAXATION
 PROPERTY ADMINISTRATION
 APPROVED AS A TAX MAP PURSUANT TO THE AUTHORITY OF
 N.J.A.C. 17:27-10 & 17:27-11
 FOR THE DIRECTOR SUPERVISOR OF TAXATION
James J. DiDonato C.T.A.
 JAMES J. COIL, CHIEF, LOCAL ASSESSMENT COMPLIANCE
 SANTO C. DIDONATO, SUPERVISING FIELD REPRESENTATIVE
 DATE: DEC 29 2003 SERIAL NO. 825

MAP REVISED TO JAN. 1, 1971 BY FRANK W. BOHREN, C.E.

NEW JERSEY DEPARTMENT OF THE TREASURY
 DIVISION OF TAXATION
 PROPERTY ADMINISTRATION
 APPROVED AS A TAX MAP PURSUANT TO THE
 PROVISIONS OF CHAPTER 175 LAWS OF 1913
C.E. BARNETT C.T.A.
 DATE: DEC 21 1959 SERIAL NO. 240

"TO SHOW CONDITIONS AS OF NOV., 2007"
WEST AMWELL TOWNSHIP TAX MAP
 HUNTERDON COUNTY NEW JERSEY
 SCALE: 1" = 400' OCTOBER 1959
 AERO SERVICE CORPORATION
 210 E. COURTLAND STREET PHILADELPHIA, PA

THIS SHEET IS A DIGITIZED COPY PREPARED BY ARH
 ENGINEERS AND SURVEYORS, 850 S. WHITE HORSE PIKE,
 HAMMONTON NJ, OCTOBER 2005.
 THE ORIGINAL APPROVED TAX MAP WAS PREPARED BY
 AERO SERVICE CORPORATION AND OTHERS.
 THE ORIGINAL APPROVED MAP IS ON FILE IN THE OFFICE
 OF THE ENGINEER.